

Capella - NB1e
(G829)
PARTS CATALOG

First edition, January 2005

Ricoh Company, LTD.

Capella - NB1e (G829)

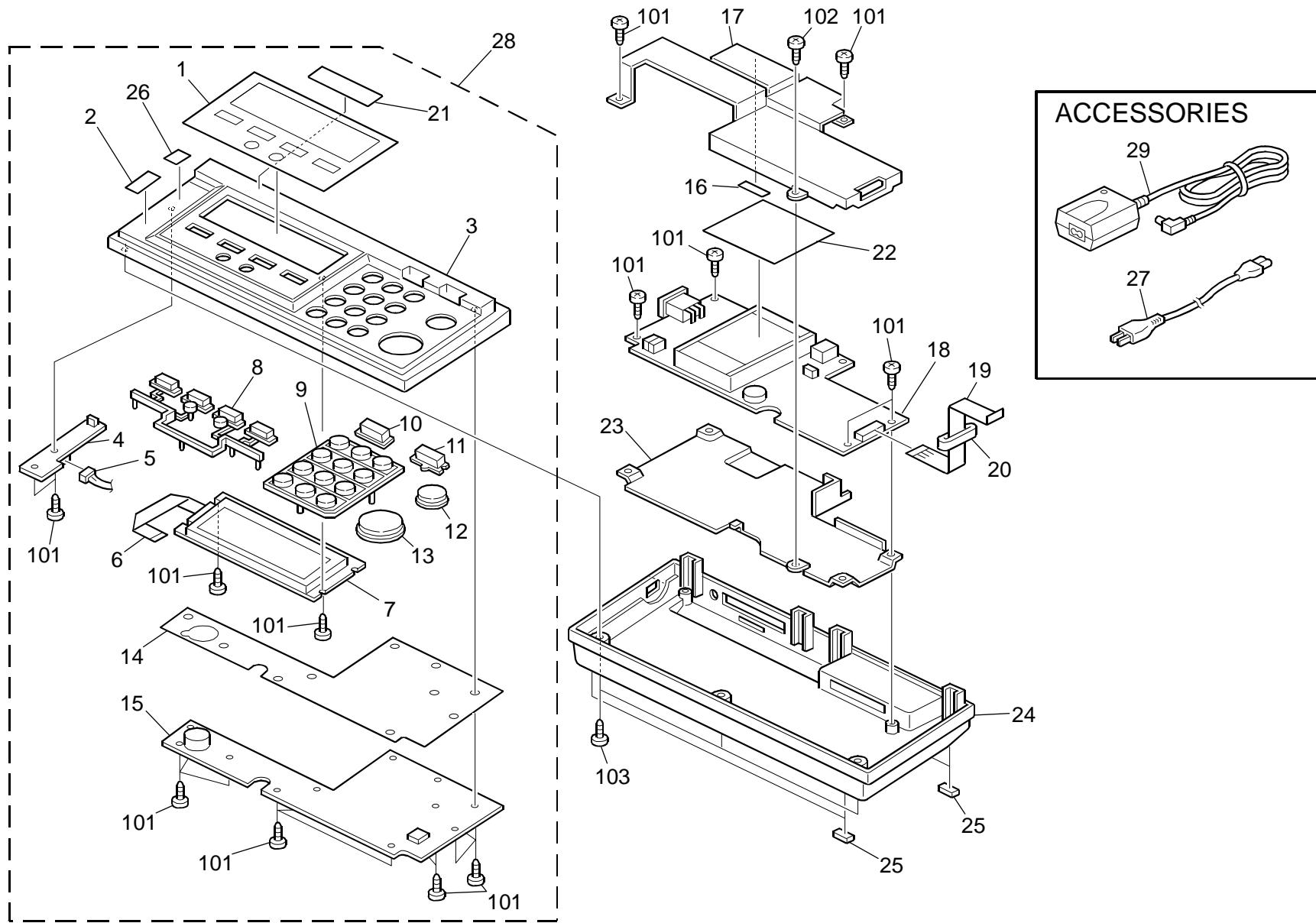
Capella - NB1e (G829)

PARTS CATALOG

This catalog gives the numbers and names of parts on this machine.

1.Scanner (G829) 2
Parts Index..... 5

1.Scanner (G829)



1.Scanner (G829)

Index No.	Part No.	Description	Q'ty Per Assembly
1	G374 3021	Panel:LCD Display	1
2	G374 3031	Decal:Key:Function	1
3	G829 3012	Cover:Upper:NA	1
3	G829 3013	Cover:Upper:EU	1
4	G374 5381	PCB:LED	1
5	G374 5510	Harness:LED	1
6	G374 5505	Harness:FFC:LCD	1
7	A250 1490	LCD	1
8	G420 1929	Keytop - Choice	1
9	G558 1926	Keytop - 10key	1
10	G421 1927	Keytop - Clear Modes	1
11	G420 1928	Keytop - User	1
12	G558 1925	Keytop - Clear/Stop	1
13	G558 1924	Keytop - Start	1
14	G374 3100	Sheet:Key Switch	1
15	G374 5350	PCB:Copu	1
16	G374 5600	Gasket:Capella	1
17	G374 4101	Heat Sink	1
18	G829 5017	PCB:CMBU:G829:Ass'y	1
19	G374 5500	Harness:FFC:Copu	1
20	G374 5610	Ferrite Core:FPC-31-12-3	1
21	G829 2311	Model Name Decal:G829:Ricoh	1
22	G374 5605	Sheet - Spvs-0.5-050060	1
23	G374 4110	Shadeing Plate:Main Control Board:L	1
24	G829 4017	Cover:Lower:NA:Ass'y	1
24	G829 4027	Cover:Lower:EU:Ass'y	1
25	G374 4020	Rubber Foot:5X10	4
26	G829 2300	Decal:Power Source:NA	1
26	G829 2301	Decal:Power Source:EU	1
27	G829 6720	Power Supply Cord:Capella:NA	1
27	G829 6721	Power Supply Cord:Capella:EU	1
28	G829 0317	Cover:Upper:NA:Ass'y	1
28	G829 0327	Cover:Upper:EU:Ass'y	1
29	G374 6700	Adapter:Capella	1

Index No.	Part No.	Description	Q'ty Per Assembly
101	0452 2606N	Tapping Screw - 2.6x6	
102	0452 2608P	Binding Self-tapping Screw:2.6x8	
103	0452 3010N	Binding Self-tapping Screw:3x10	

Parts Index

Parts Index

Part No.	Description	Page and Index No.
G829 0317	Cover:Upper:NA:Ass'y	3 - 28
G829 0327	Cover:Upper:EU:Ass'y	3 - 28
G829 2300	Decal:Power Source:NA	3 - 26
G829 2301	Decal:Power Source:EU	3 - 26
G829 2311	Model Name Decal:G829:Ricoh	3 - 21
G829 3012	Cover:Upper:NA	3 - 3
G829 3013	Cover:Upper:EU	3 - 3
G829 4017	Cover:Lower:NA:Ass'y	3 - 24
G829 4027	Cover:Lower:EU:Ass'y	3 - 24
G829 5017	PCB:CMBU:G829:Ass'y	3 - 18
G829 6720	Power Supply Cord:Capella:NA	3 - 27
G829 6721	Power Supply Cord:Capella:EU	3 - 27

Part No.	Description	Page and Index No.
A250 1490	LCD	3 - 7
G374 3021	Panel:LCD Display	3 - 1
G374 3031	Decal:Key:Function	3 - 2
G374 3100	Sheet:Key Switch	3 - 14
G374 4020	Rubber Foot:5X10	3 - 25
G374 4101	Heat Sink	3 - 17
G374 4110	Shadeing Plate:Main Control Board:L	3 - 23
G374 5350	PCB:Copu	3 - 15
G374 5381	PCB:LED	3 - 4
G374 5500	Harness:FFC:Copu	3 - 19
G374 5505	Harness:FFC:LCD	3 - 6
G374 5510	Harness:LED	3 - 5
G374 5600	Gasket:Capella	3 - 16
G374 5605	Sheet - Spvs-0.5-050060	3 - 22
G374 5610	Ferrite Core:FPC-31-12-3	3 - 20
G374 6700	Adapter:Capella	3 - 29
G420 1928	Keytop - User	3 - 11
G420 1929	Keytop - Choice	3 - 8
G421 1927	Keytop - Clear Modes	3 - 10
G558 1924	Keytop - Start	3 - 13
G558 1925	Keytop - Clear/Stop	3 - 12
G558 1926	Keytop - 10key	3 - 9

Part No.	Description	Page and Index No.
0452 2606N	Tapping Screw - 2.6x6	3 - 101
0452 2608P	Binding Self-tapping Screw:2.6x8	3 - 102
0452 3010N	Binding Self-tapping Screw:3x10	3 - 103

Part No.	Description	Page and Index No.